



SC-S4S5-SEQ





## **SC-S4S5-SEQ**

Ensure the heart of your driving experience beats with precision and power – introducing the Ultimate Sequential Billet Shifter with Integrated Push Pull Cutting Brake. This engineering marvel is meticulously crafted to redefine your driving encounters, designed for S4/S5 S4D/S5D Weddle/Mendeola sequential Trans Axle systems but will work with other Transmissions that utilize a 2” throw linkage. What sets it apart? It's not just an accessory; it's a pinnacle of innovation and performance, proudly sourced and built in the USA.

Crafted from premium 6061 aluminum, this shifter is a fusion of strength and lightness, promising uncompromised durability while keeping weight at a minimum. Every facet has been carefully considered to provide a seamless shifting experience that transcends your expectations. Stainless steel bearings, hardware, and a pivot axle ensure exceptional longevity, maintaining peak performance even under the most demanding conditions.

Bid farewell to concerns about bushing wear and imprecise shifts. This shifter's design eliminates bushings, guaranteeing a consistently smooth and accurate shift each time you engage the gears. The self-centering shift handle enhances control, making gear changes feel as intuitive as the open road.

A standout feature is the integrated push-pull cutting brake, seamlessly incorporated into the design for unparalleled control. Swiftly manage your turns and navigate challenging terrains with confidence, knowing you have the control to handle any situation.

Precision and customization are at your fingertips with adjustable positive stops on both the forward and reverse levers. Carefully engineered to prevent over-travel, these stops safeguard your shift linkage, ensuring longevity in your investment.

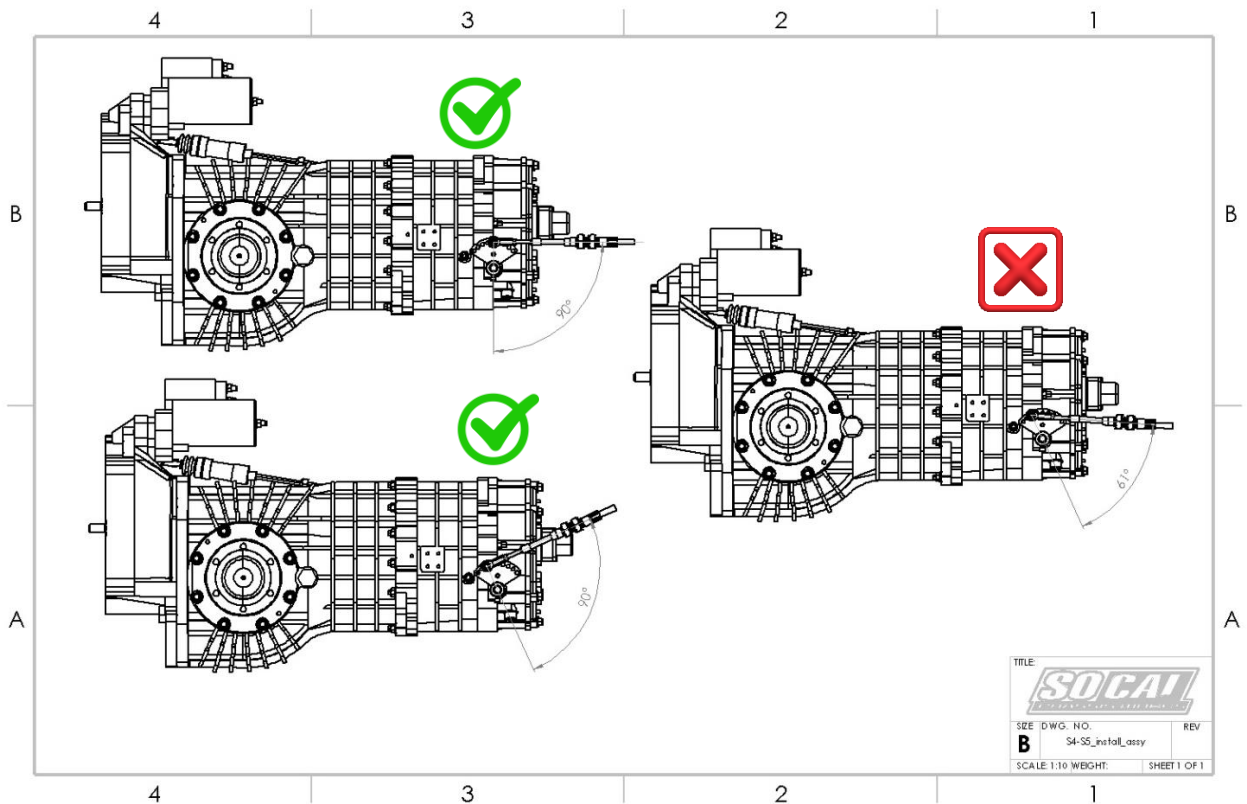
Your journey doesn't end with the shifter – it extends to the proper cable and linkage setup. Our shifter uses 2” Throw #4 Bulkhead style Cables for both levers. Depending on your transmission manufacturer and car builder, your transmission end may be Clip style. Proper cable and linkage setup are critical. A well-executed setup not only protects your transmission and linkage from undue wear but also guarantees a trouble-free system for many years to come.

Elevate your driving experience, ensure precision in every shift, and embark on a journey where innovation meets reliability. The Sequential Billet Shifter with Integrated Push Pull Cutting Brake – sourced and built in the USA – is your ticket to unparalleled performance.

Proper cable and linkage setup is critical. A proper setup will save your transmission and linkage from undue wear and will ensure a system that will last for many trouble-free years. The following diagram will help you to set up your system properly.



## SC-S4S5-SEQ



The shift linkage and cable should be set up to be 90 degrees from the center of the shift linkage pivot center and the cable, as shown above. Not having the linkage properly configured will lead to a shift travel that is not centered at the shifter, overtravel of the cable, difficulty in making smooth shifts, and in some cases, damage to the transmission.



## SC-S4S5-SEQ

Before tightening the bulkhead nuts on the shifter, follow these precise steps for a seamless installation process:

### 1. Transmission End Setup:

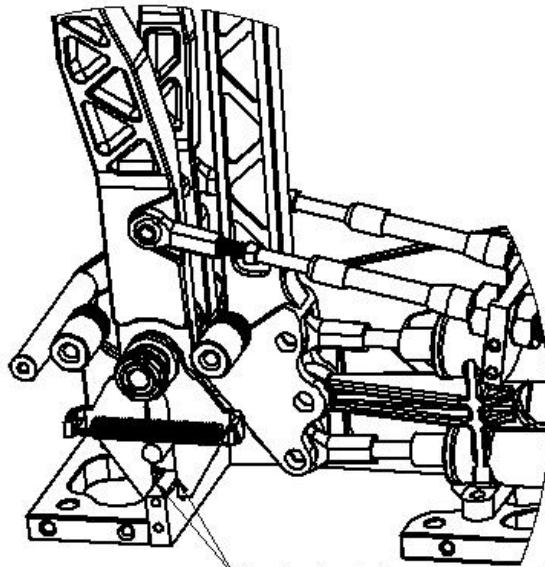
- Secure the Transmission end to the transmission linkage.
- Center the cable in the cable stay at the transmission end.
- Tighten the cable bulkhead nuts or clip into its final position at the transmission end.

### 2. Shifter End Cable Installation:

- Feed the cable through the bulkhead stay at the shifter, ensuring the lock washers are in place.
- Do not tighten the bulkhead nuts at this point.

### 3. Rod-End Installation:

- Install the rod-end jam nut on to the cable.
- Install the rod-end to approximately half the allowable distance.
- Temporarily connect the rod-end to the shift lever.
- Finger tighten the bulkhead nut, noting the position of the shifter at the centering stop.
- stop.



Centering linkage arm should be lightly touching the stop on both sides indicating the shifter is properly centered

### 4. Final Tightening:

- Tighten the bulkhead nuts, taking care to maintain the shifter's centered position.
- Tighten the rod-end mounting screw and jam nut.



## SC-S4S5-SEQ

### 5. Reverse Lever Adjustment:

- The Reverse lever only uses 1” of cable travel.
- Position the lever for disengagement and engagement based on the driver’s preference within the travel limits of the shifter.
- Set the Lever limit stops to stop the linkage just shy of hitting the hard stop of the transmission linkage and the end of the cable stroke.

### 6. Stops Adjustment:

- After the shifter is completely installed, set the stops.
- Pull the shifter back until the end of stroke is reached.
- Slide the rear shifter stop forward until contact is achieved.
- Release the shifter and move the stop approximately 1/16” further forward.
- Tighten the stop screw.
- Check the shifter travel; it should engage the gear without bottoming out the cable or transmission linkage travel.
- Repeat the procedure for the forward stop and Reverse lever.

Following these meticulous steps ensures not only a trouble-free installation but also optimizes the performance of your Sequential Billet Shifter, providing precision and control for a superior driving experience.

